



# SFBA Windsurf/Kitesurf Safety Day 2006

Hosted by Coyote Point Yacht Club

Supported by:

West Marine

Kite Wind Surf

Helm of Sun Valley

Icom

ASD Windsurfing

DaKine



# San Francisco Boardsailing Association

- Promoting Safety
- Protecting and Improving Access
- Community Building \*

[sfba.org](http://sfba.org)

# SFBA Accomplishments

- Crissy Field - Parking/Improvements
- Berkeley - Improved Launch to be built at H's Lordships
- 3rd Avenue - Safety Signs / Rinse Station
- 3rd Avenue - Work with City/Golf Course re. Golf Ball Problem
- Tomales – Pushed for Site Acquisition by Park Service
- Treasure Island - Sailing spots at incorporated into Bay Plan
- Outhouses (Larkspur, Treasure Island)
- Coyote Point – Plans for Rigging Area/ Ramp Repair

# Wind Conditions

## Offshore Winds

Will you be able to return to shore?

## Onshore Winds

Could you be pushed back onshore?

## Gusty Winds

Impaired Control



## Stability

Will the wind last?

# Water Temperature



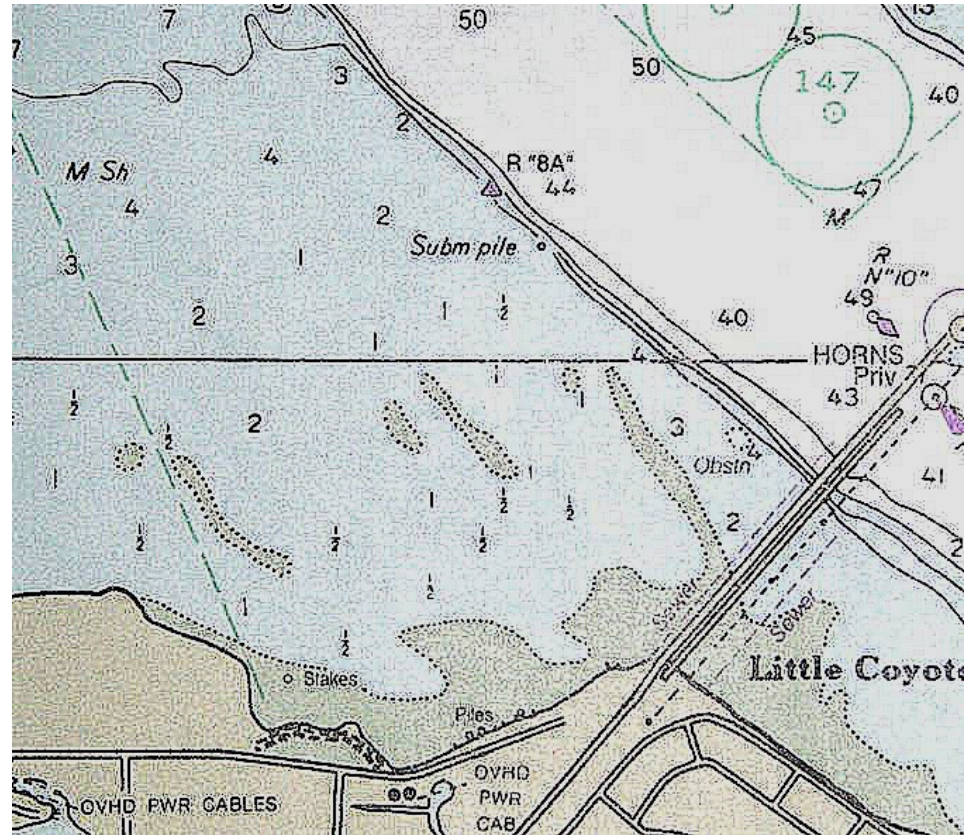
## Hypothermia –

- a comfortable suit may not be enough in an emergency
- Hypothermia leads to impaired judgment

# Submerged Hazards

- Rocks
- Mud/Sand Bars  
(Berkeley, 3rd Ave.)
- Old Piers/Pilings

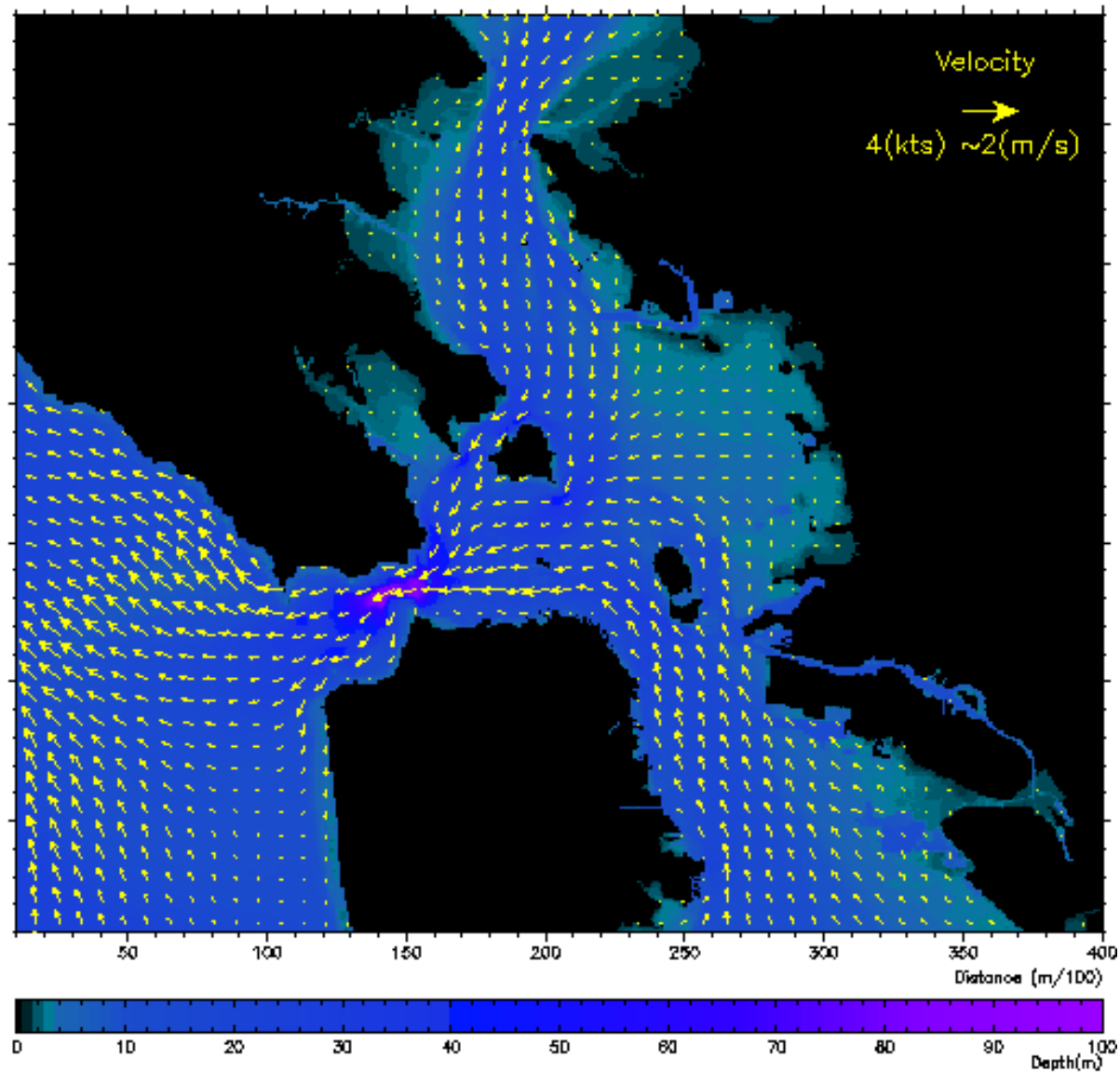
Check out your site at a  
very low tide



# Currents

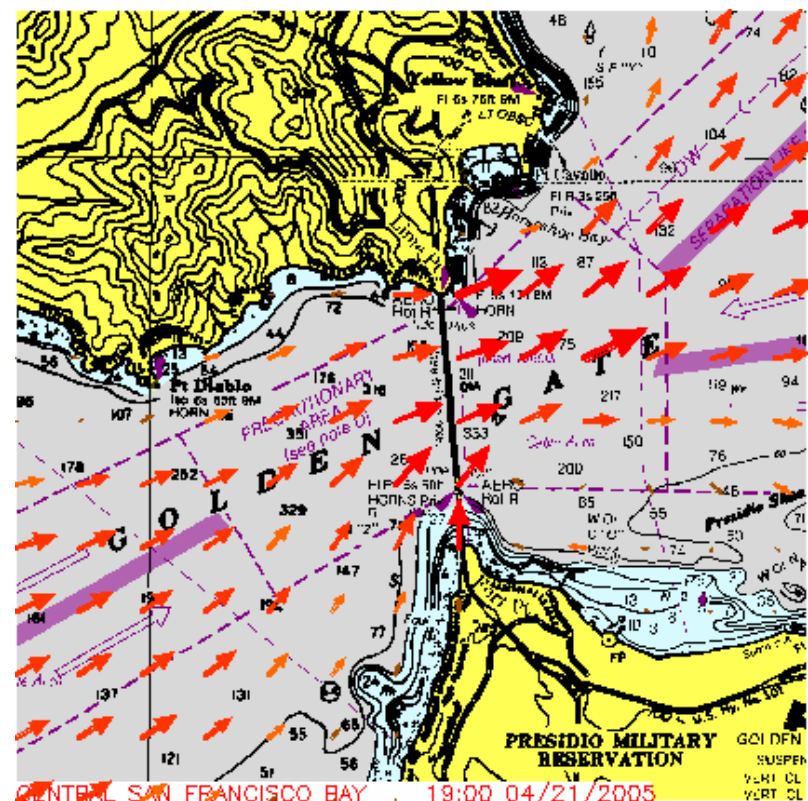
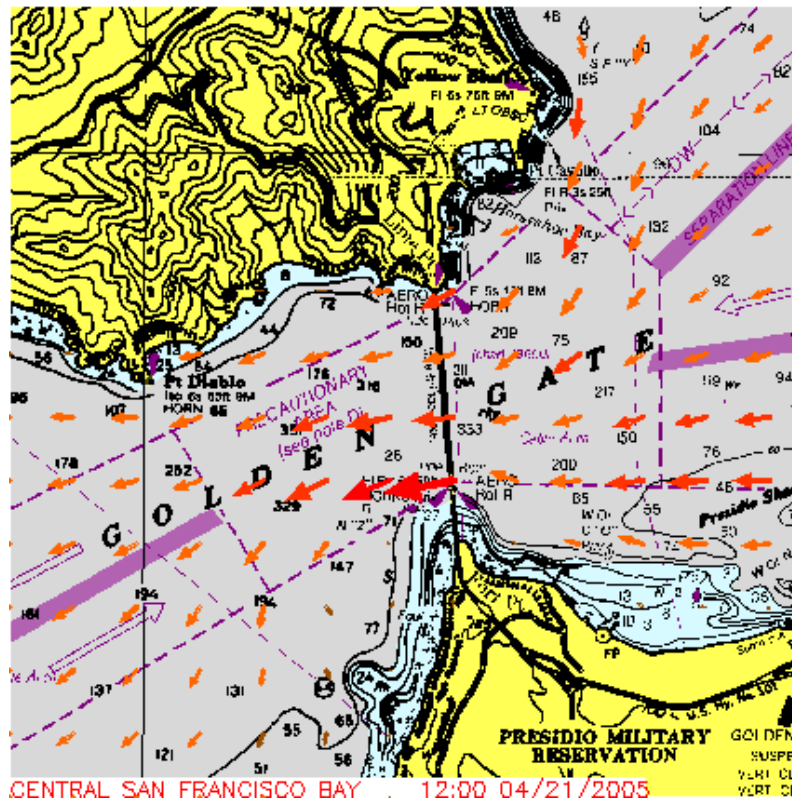
CENTRAL SAN FRANCISCO BAY

14:00 08/05/1998



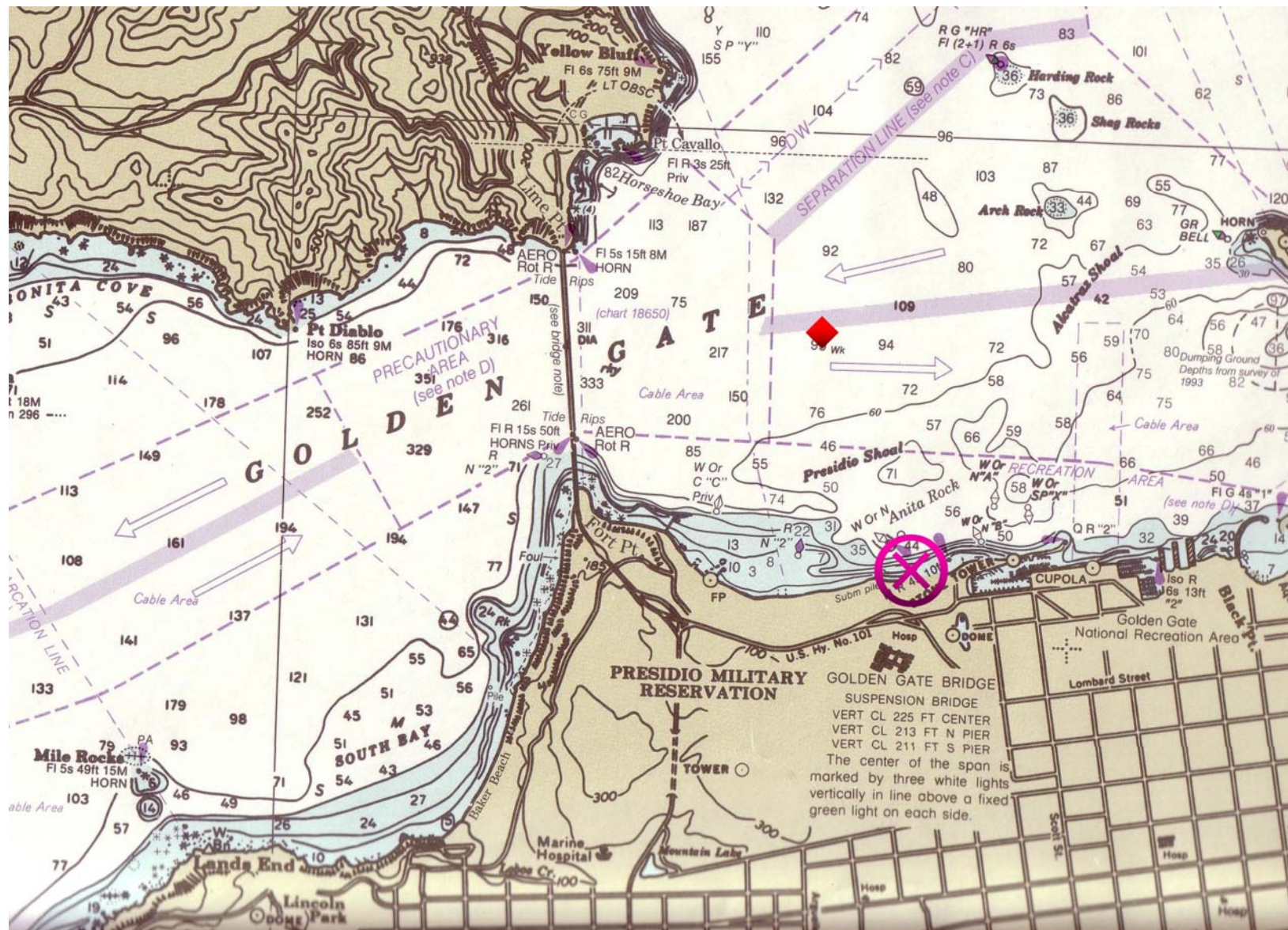


# Currents



 1.0
  2.0
  3.0
  4.0 knots









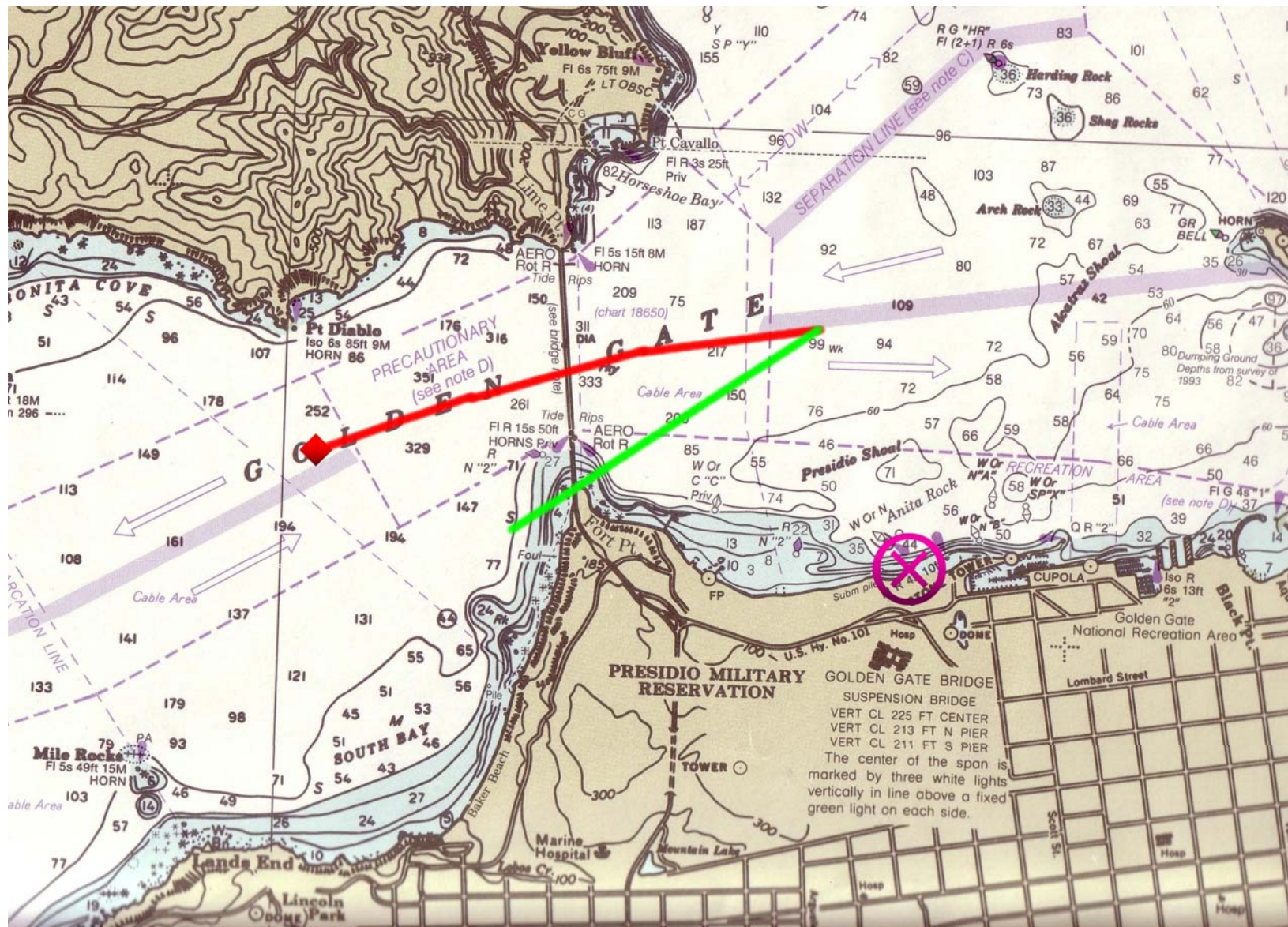






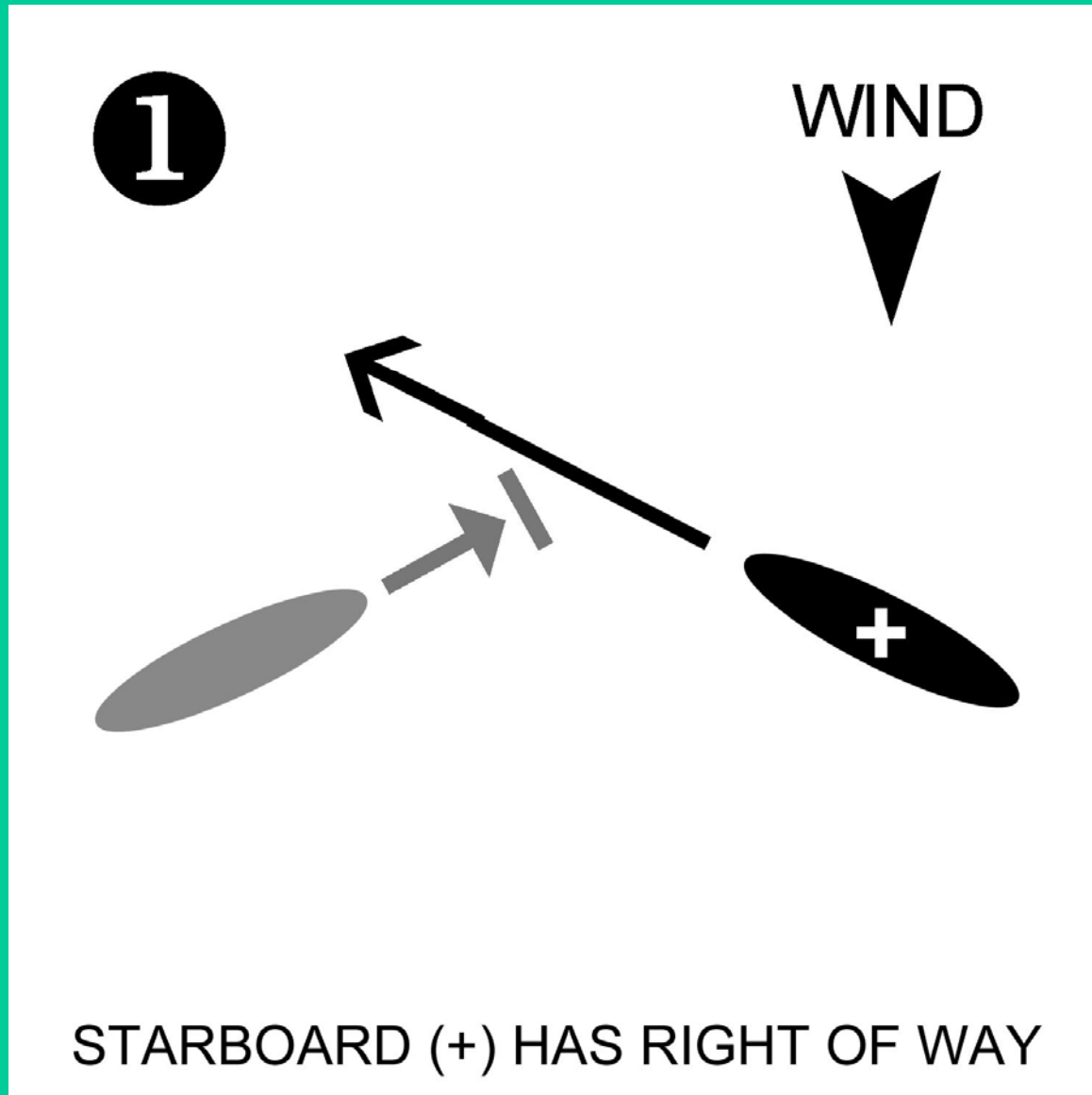




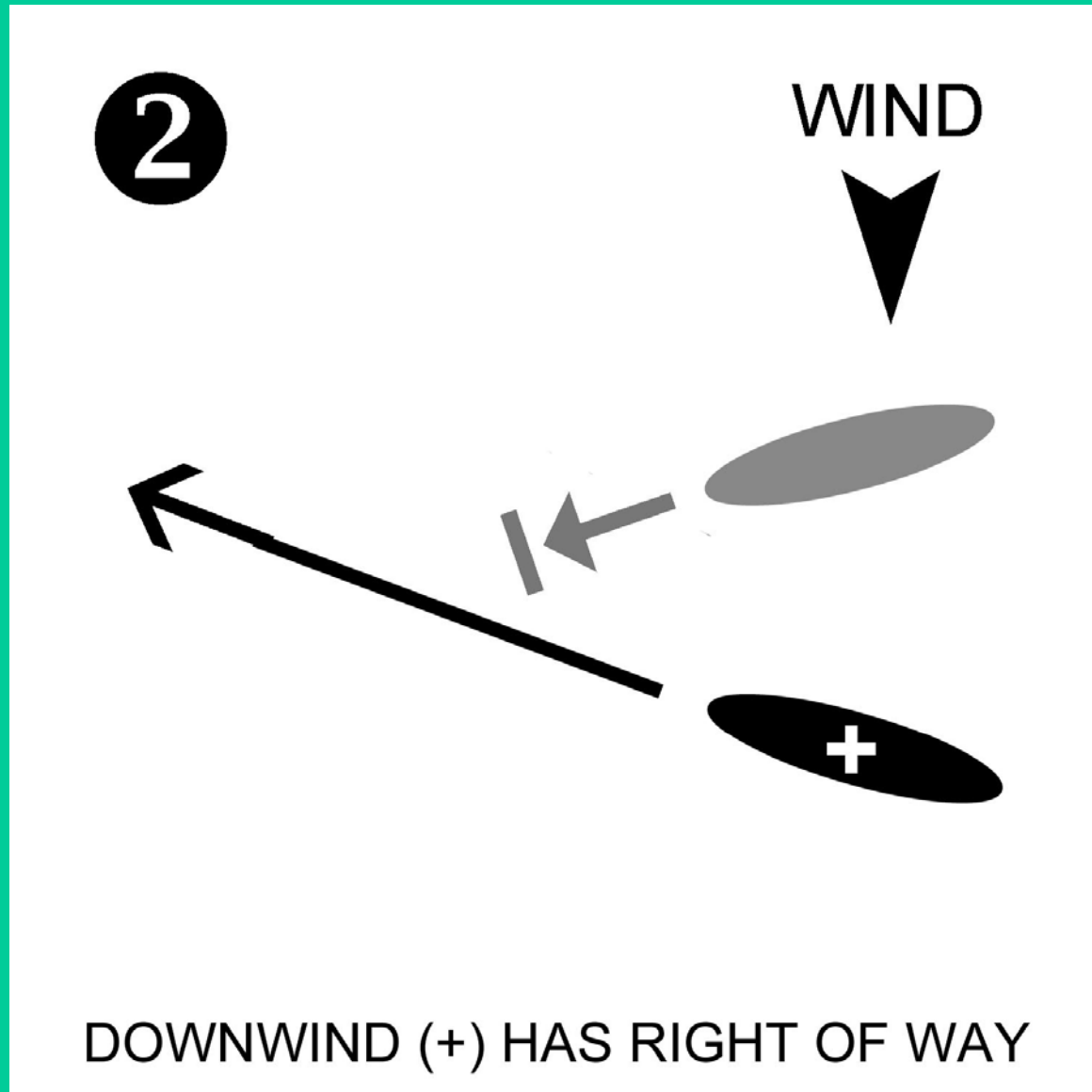


Green Line –Swimming 2 m.p.h. cross current

# Right of Way – Rule 1

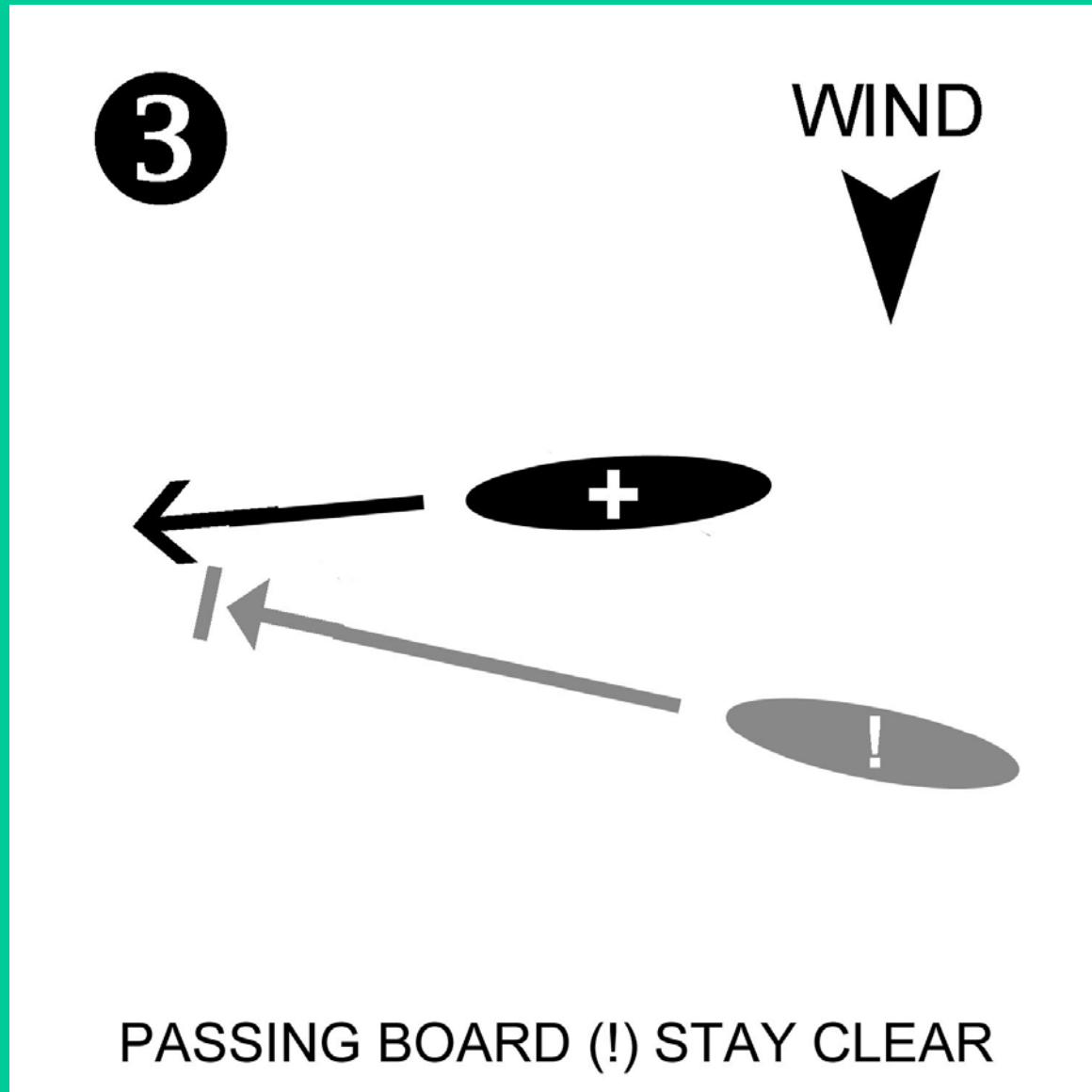


# Right of Way – Rule 2





# Right of Way – Rule 3



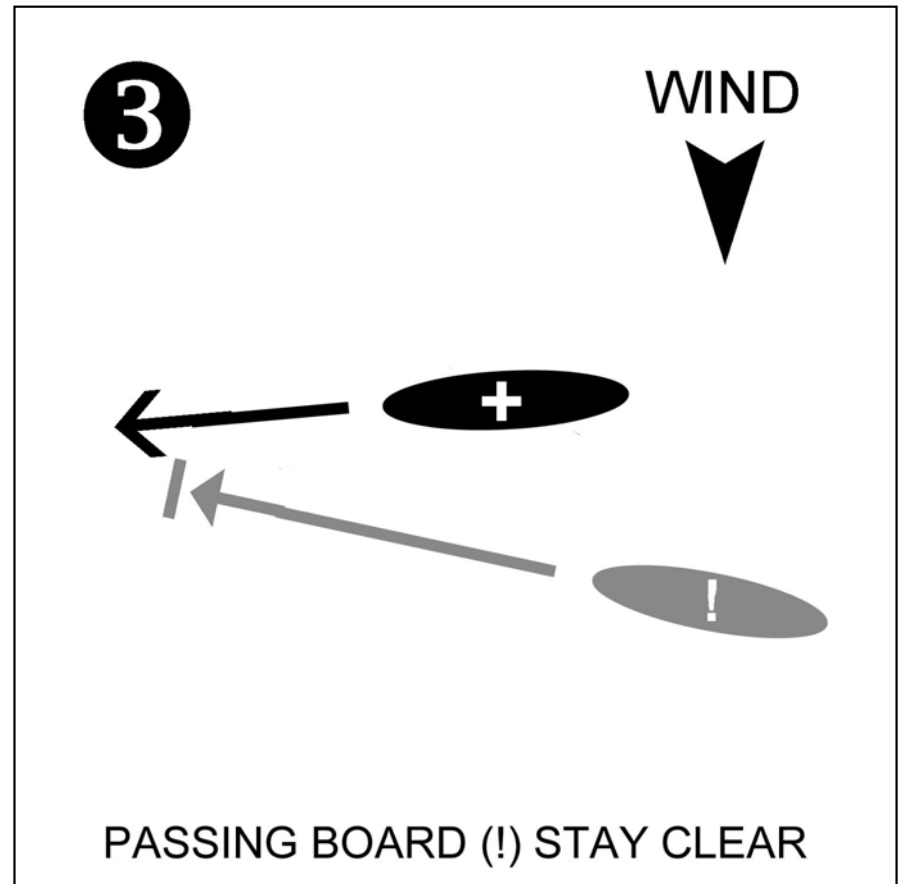
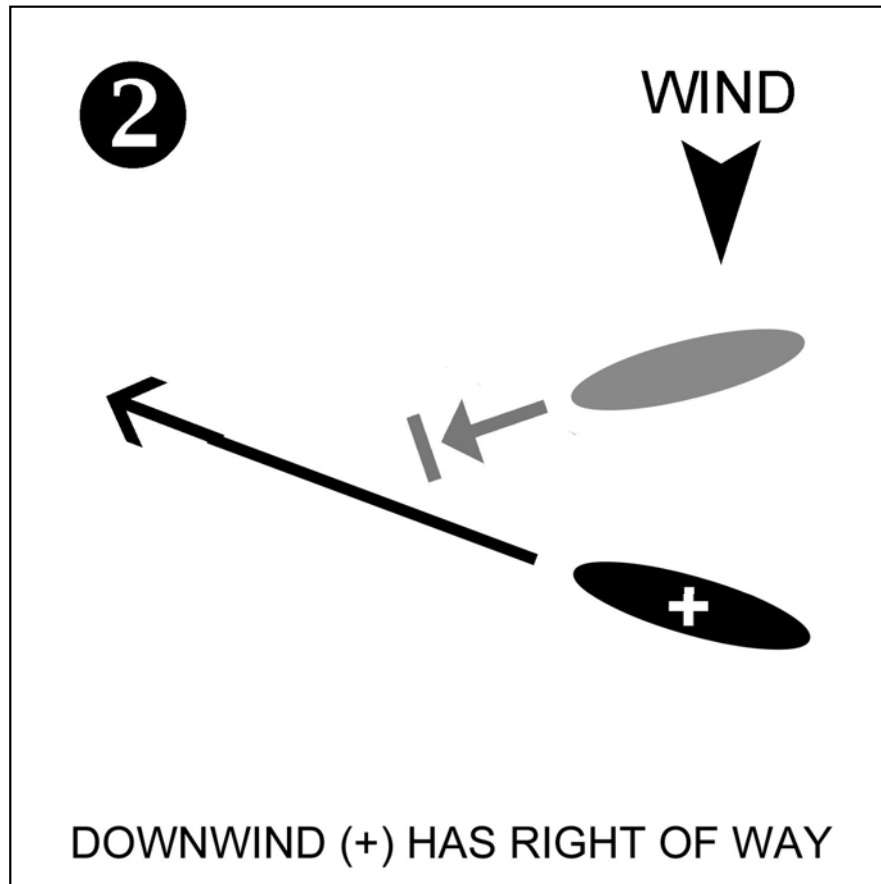
# Right of Way – Rule 4

## Avoid a Collision

REGARDLESS of all other rules

If on port, give the benefit of the  
doubt

# Racing & Right of Way



# Shipping/Boat Traffic

- Yield to Commercial Vessels in a Channel
- Vessels Transiting Crowded Windsurf/Kitesurf Zones
- Caution: Towed Vessels and Barges
- Caution: Anchored Barges

# Heads Up Sailing

- 360 degree awareness
- Anticipation
- Looking for Signals – Giving Signals

# Safety Margin

Conditions – Allow for the possibility that wind conditions may change

Passing Distance – Allow space so that a mistake or problem does not lead to a collision

Safety Gear – Carrying safety gear allows you to safely deal with problems

# Consideration

No Lanes, No Signs, Traffic Cops

Safety depends upon Consideration

- Give less experienced or underpowered some leeway
- Do not pass too close
- Leave room for a sailor who is getting squeezed



# Community

- Beach Education
- Buddy System (Formal & Informal)
- Mutual Respect
- Including Newcomers
- Local Standards

# Rescue Options

- Self Rescue
- Windsurf/Kitesurf Rescue
- Boat Rescue
- Coast Guard Rescue

Always flag down another windsurfer/kiter and ask them to stay nearby while you evaluate the situation

# When to Call for Emergency Help?

## Consider:

- Help Available in the Area
- Hypothermia Risk
- Distance from Shore
- Currents
- Daylight Remaining

If it is a tough call, make the call for help

# Contact Coast Guard Direct

## Phone

(415) 331- 8247

(415) 399-3451

## Radio

VHF Channel 16

Advise of:   > Emergency  
                  > End of Emergency  
                  > Lost Gear Afloat

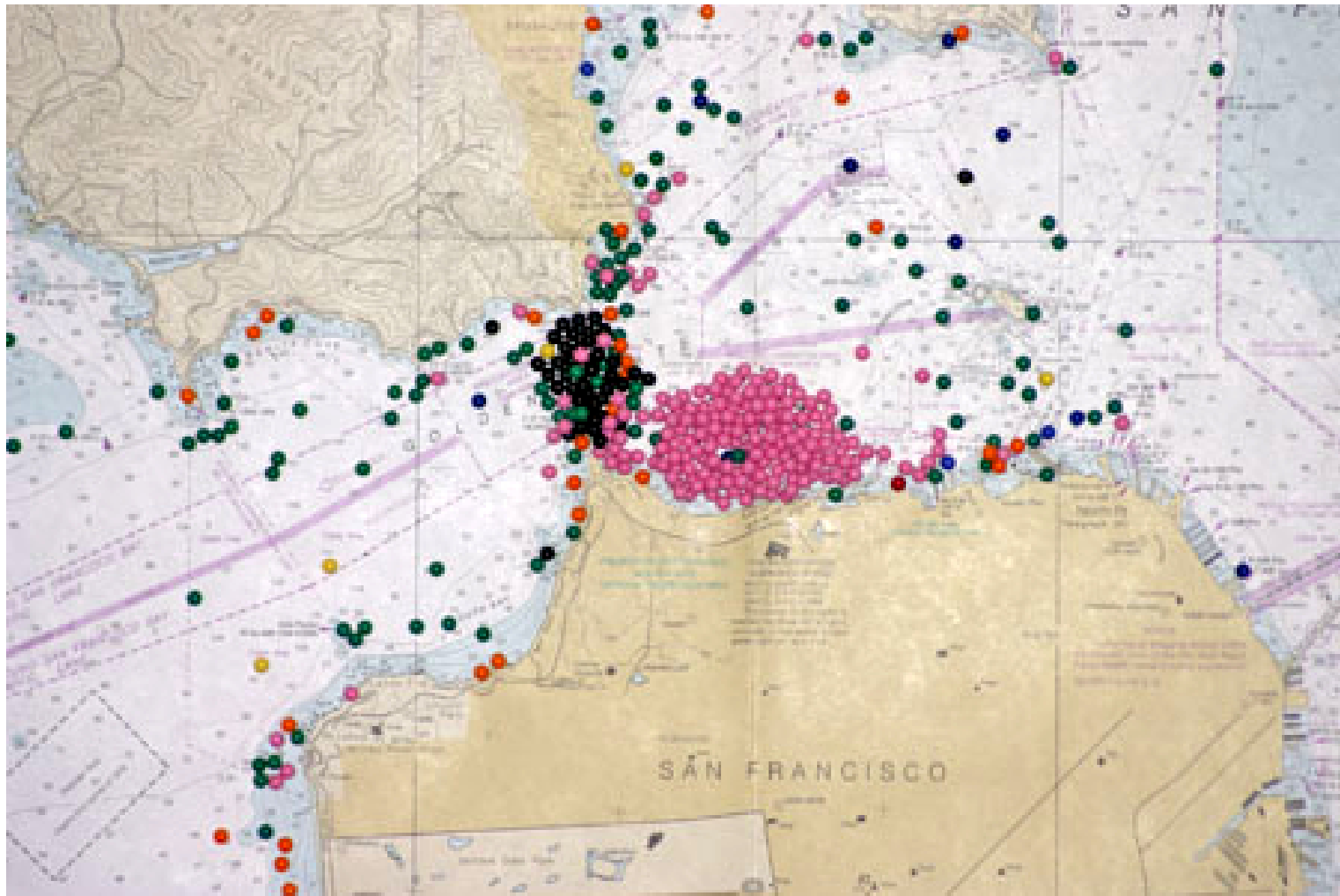
Always Cooperate with the Coast Guard

# Label your Gear



- Prevent Unnecessary Search & Rescue
- Allow Coast Guard to ID you if you are missing
- Recover Lost Gear
  - Lost On the Water or
  - Left on the Beach

# USCG Rescues



# USCG Stations

**United States Coast Guard  
Station San Francisco**



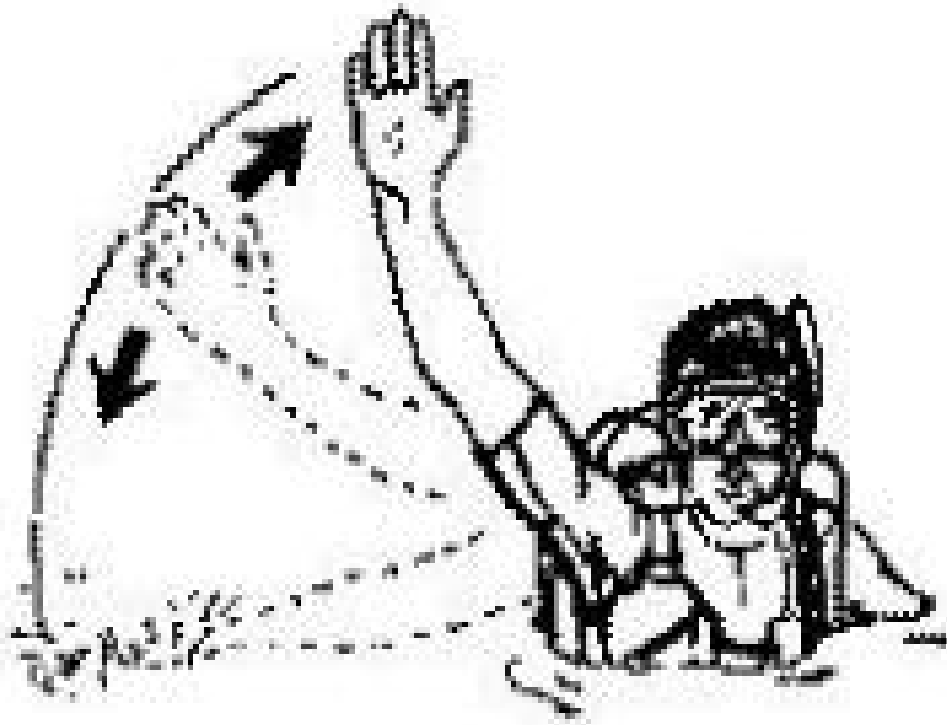


# Air Station San Francisco



Area of Responsibility:  
200 miles of coast plus  
parts of 4 states

# Signals





# SFBA/USCG Training



# Security Zones – Bridges/Airports



25 yards around GG/Bay Bridge Abutments and Piers



# Security Zones - Ships



100 yards around Tankers, Cruise Ships, High Interest Vessels

# U.S. Coast Guard Station Golden Gate Open House



Saturday, May 21<sup>st</sup>, 2005

10:00-3:00

Ft. Baker – 435 Murray Circle, Sausalito

BBQ, Rescue Demo, Boat Tours, Hats/Shirts for Sale

Proceeds benefit USCG Station Golden Gate Morale Fund

# U.S. Coast Guard Auxiliary



Volunteer Arm of the Coast Guard





Report Suspicious Activity:

1-877-24-WATCH / (1-877-249-2824) or VHF Channel 16

Emergencies, Contact MSO/Group San Francisco

(415) 399-3547 or (415) 399-3508

[www.AmericasWaterwayWatch.com](http://www.AmericasWaterwayWatch.com)

# Safety Pack



# Strobe Lights



# Flares



# Line

- Tow Line (10-15')
- Multiple Shorter Lines (you can always join pieces)

# Whistle



# VHF Radio vs. Cell Phone

- Waterproof
- Direct Contact to Boats
- Non-Emergency Option
- Line of Site Range
- Ability to Monitor Activity



- Not Waterproof
- No Direct Contact
- Variable Range
- Cheaper?



# Bag Your Radio/Phone

- Protects Radio
- Cuts Wind Noise on Microphone

- Clean & Dry
- Test Regularly





# Radio Calls

## Radio Call:

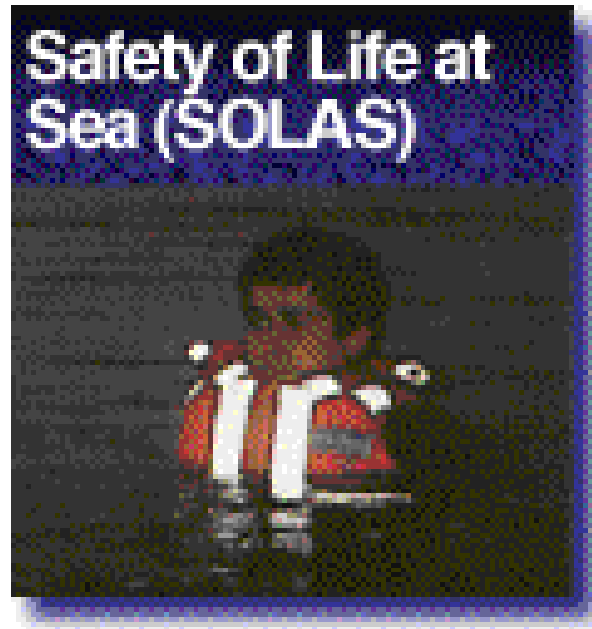
- Mayday/Pan-Pan
- Name/Call Sign
- Position
- Describe situation
- “Over”/ “Out”

## Channels:

- 16 – Emergency
- 14 – Vessel Traffic
- 9 – General Use
- 22A – Coast Guard

\*\* Open Frequencies \*\*

# Lights/Reflective Materials



# Compass



# Mirror/Smoke



# Helmets



Assess your risk



# Board Bundle 1





# Board Bundle 2





# Board Bundle 3





# Board Bundle 4





# Board Bundle 5

